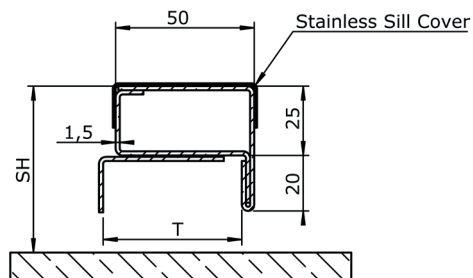


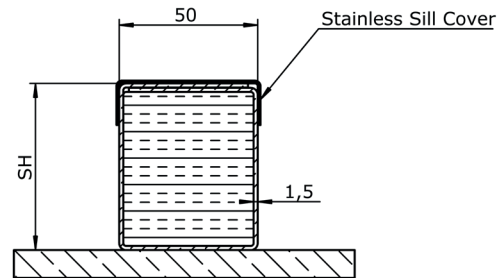
SILL TYPES. B DOORS

SH = Sill Height
T = Wall Thickness



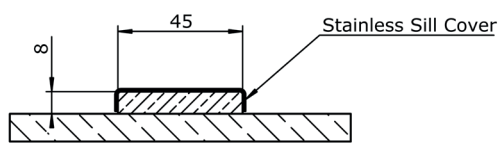
Sill Type: **S1** (standard)

SH MIN: 50 mm

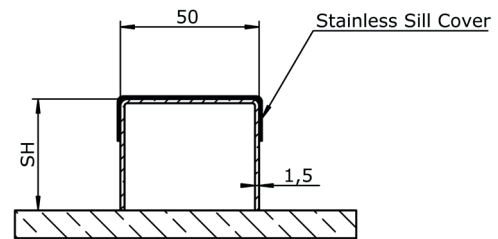


Sill Type: **S2** (standard)

SH MIN: 50 mm

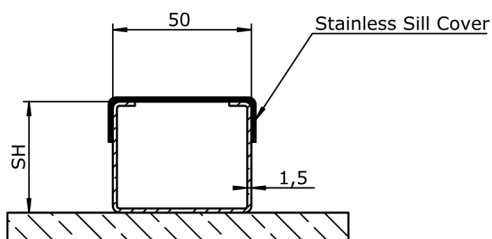


Sill Type: **S3** (standard)



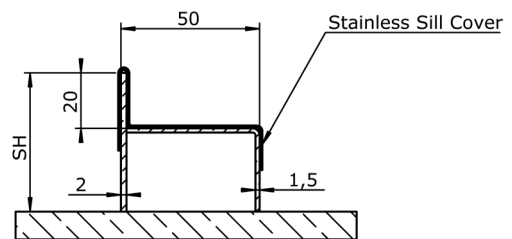
Sill Type: **S4** (standard)

SH MIN: 15 mm
SH MAX: 50 mm



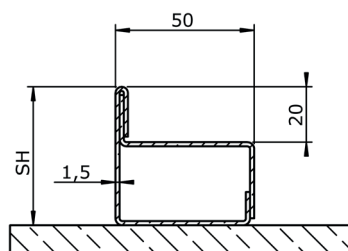
Sill Type: **S5** (optional)

SH MIN: 15 mm
SH MAX: 50 mm



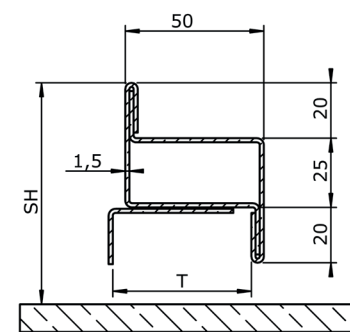
Sill Type: **S6** (optional)

SH MIN: 35 mm



Sill Type: **S7** (optional)

SH MIN: 35 mm



Sill Type: **S8** (optional)

SH MIN: 70 mm