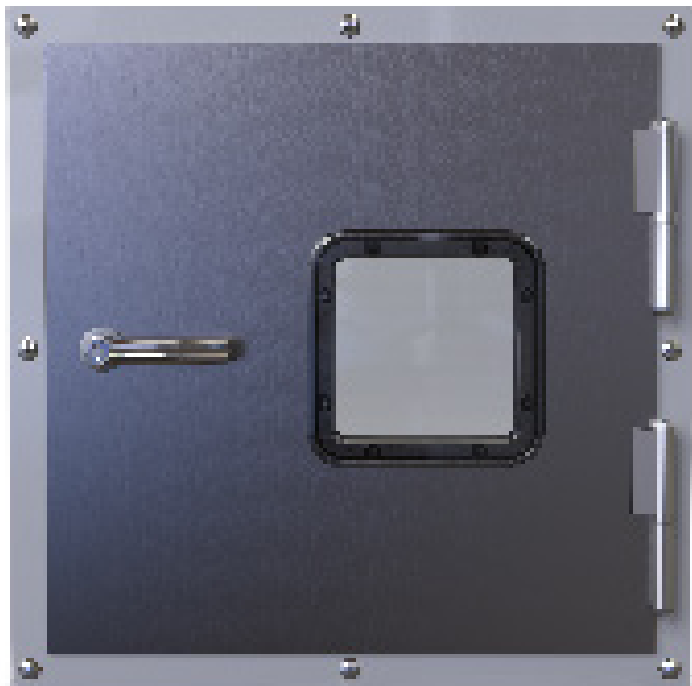


FAN ROOM HATCH

Art nr: MV1050

MOMEC
DOORS OF SWEDEN

Fan room hatch that is adapted to fit in smaller fan and ventilation rooms.



Fire class:	Unclassified
Doorleaf:	Made of 1 mm Magnelis steel sheet that s insulated with mineral wool
Thickness of door leaf :	50 mm
Frame:	Steel 3 mm. Standard is powder coating in RAL 9010
Hinges:	Stainless steel, 2 pcs with grease nipple
Knobs outside:	Stainless steel, 1 on hinge side
Knobs inside:	Emergency handle, 1 on stop side
Sealing:	Silicone strip on door leaf and frame
Max. clear opening:	W 1000 x H 1000 mm

OPTIONS

- The entire hatch in stainless steel.
- Frame in Dobel sheet metal
- Window W 200 x H 200 mm.

DOOR SPAREPARTS

We provide all the necessary accessories for our doors. Please contact our service department at:

Mail: service@momec.se | Phone: +46 734 42 55 87

Gaskets
Hinges
Handles
Lock Cases
Door Closers
Cylinders
Window Panels
Accessories

