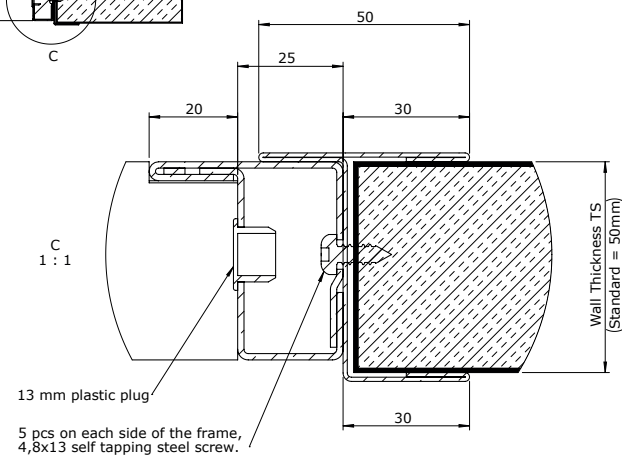
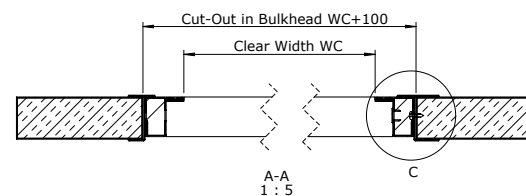
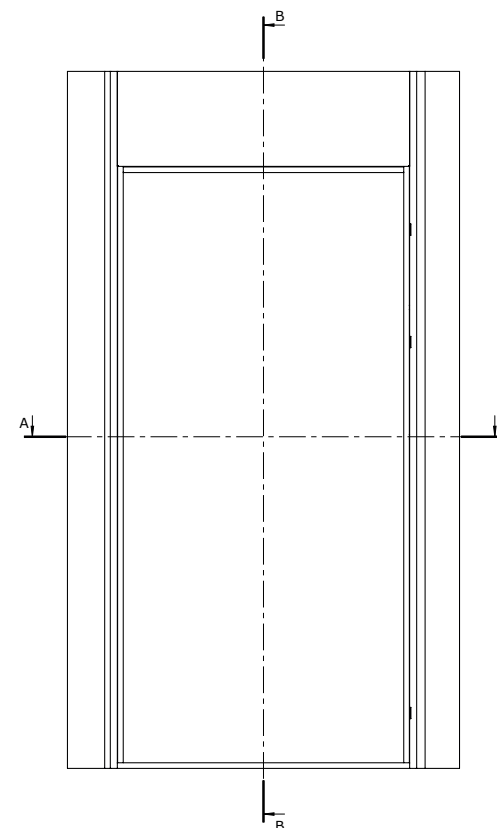
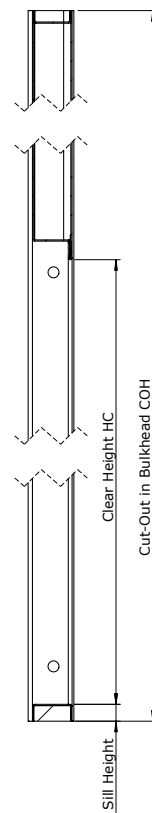


# MOUNTING INSTRUCTION FOR B-RATED DOOR

**MOME C**  
DOORS OF SWEDEN

1. Check the hole in the bulkhead that it is within tolerance according to the drawing.
2. Before installing the frame, remove the door leaf from the frame. Handle carefully so that scratches and marks do not occur. The same door leaf must be mounted in the associated frame.
3. Place the frame into the bulkhead. Frame and mounting frame must be fitted tightly together and tightly against the wall panel. Secure the frame with four screws through the pre-punched holes in the corners of the frame.
4. Put the door leaf back into the frame.
5. Check that the door leaf moves freely in the frame and lines up around the frame. If necessary adjust the hinges with special tools for this purpose.
6. Install remaining screws. Check that the screws in the corners are still tight. Then install the attached plastic caps to cover the holes in the frame.
7. Fix the sill to the deck if required. If the sill stand directly on the steel deck, tack weld the sill to the deck.
8. Mount handles and other accessories.

B-B  
1 : 5



13 mm plastic plug

5 pcs on each side of the frame,  
4,8x13 self tapping steel screw.